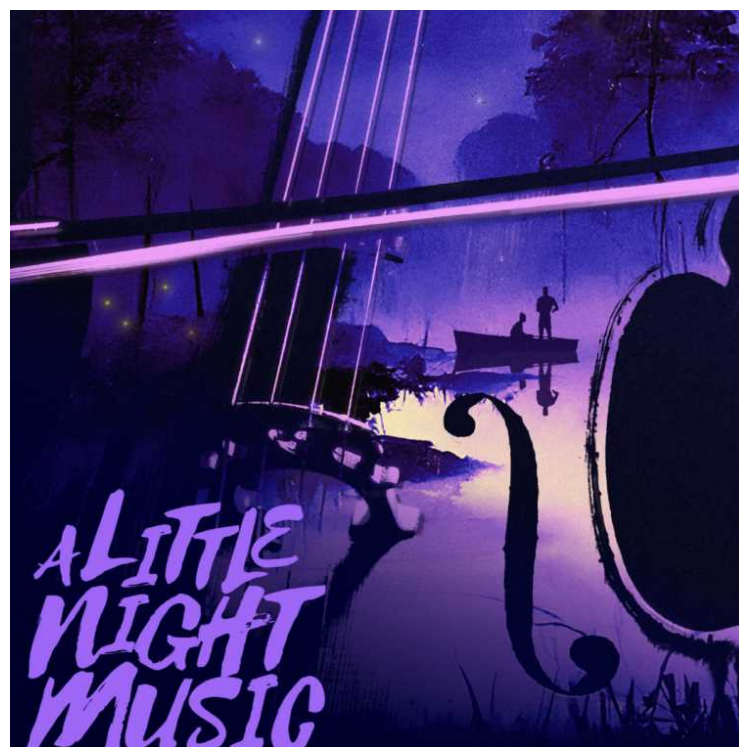


**Peter Burns**  
SOUND DESIGN  
PBURNS@ANDREW.CMU.EDU  
(616) 401-9876



BOOK BY: HUGH WHEELER  
MUSIC & LYRICS BY:  
STEPHEN SONDHEIM

DIRECTED BY:  
**ETHAN HEARD**

**PRODUCTION TEAM**

PRODUCER  
CMU SCHOOL OF DRAMA  
MUSICAL DIRECTOR  
**RICK EDINGER**  
SCENIC DESIGNER  
**PAUL MOLINA**  
LIGHTING DESIGNER  
**JESSICA WINWARD**  
COSTUME DESIGNER  
**EVAN RILEY**  
SOUND DESIGNER  
**PETER BURNS**  
JOB LEAD  
**AKSHATHA SRIVASTAVA**  
PRODUCTION MANAGER  
**KYLE MUSGROVE**

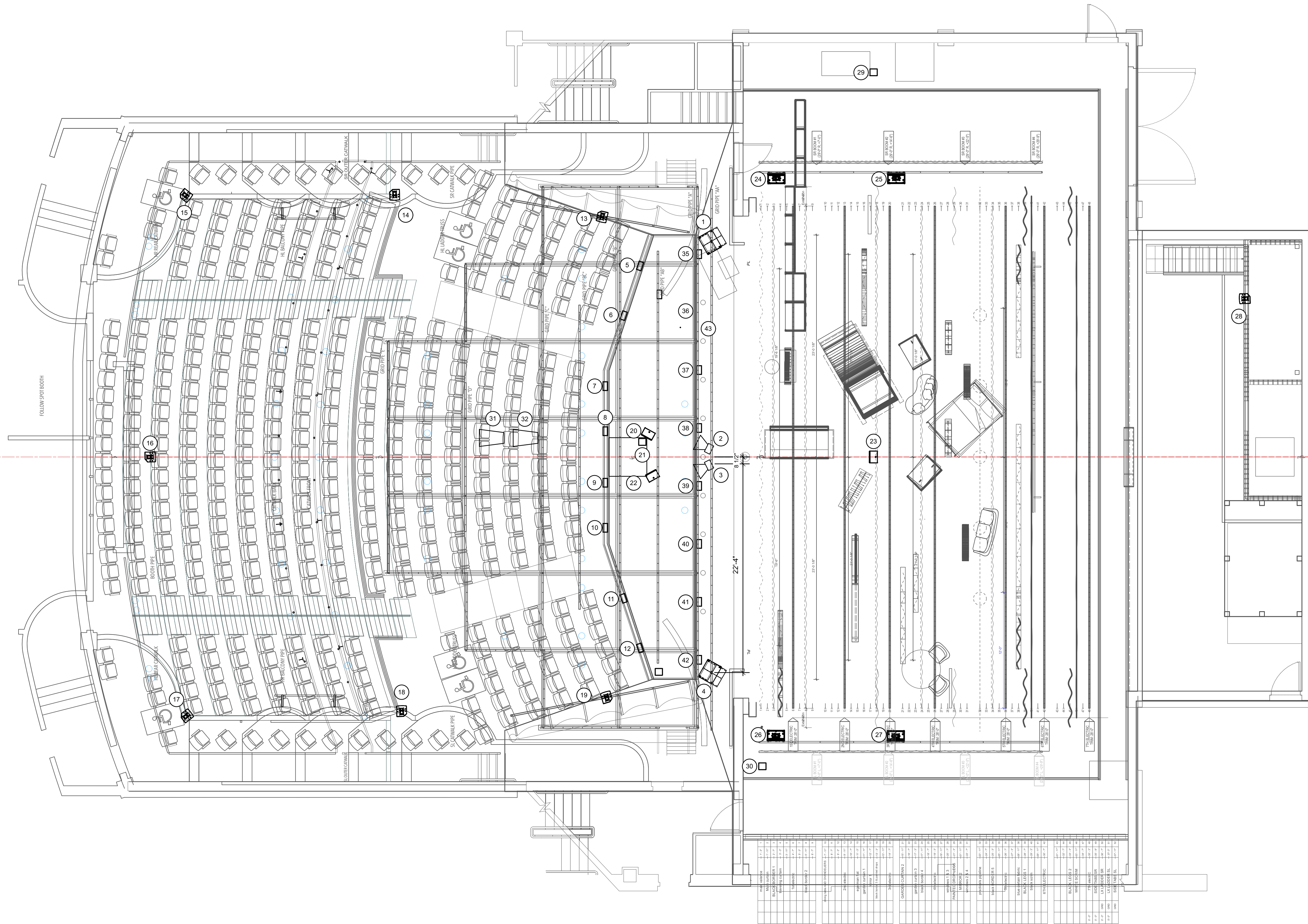
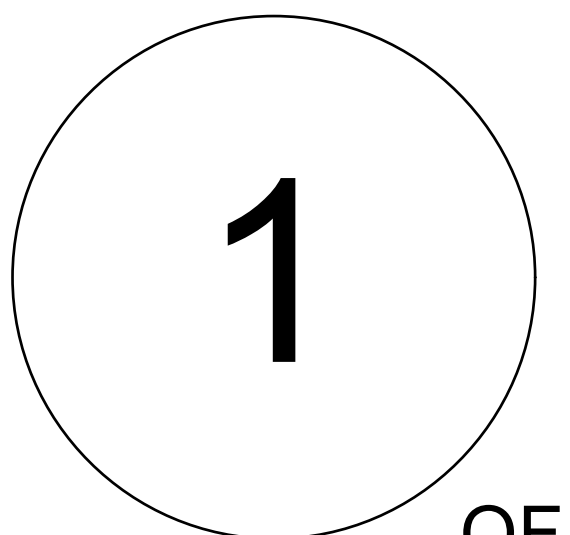
NOTES:  
- Not drawn are the two permant gallery speakers they are speakers 33-34  
- Both the Pit Rail & Stage Lip speakers are permant speakers 5-12 & 35-42

**THE CHOSKY THEATRE**

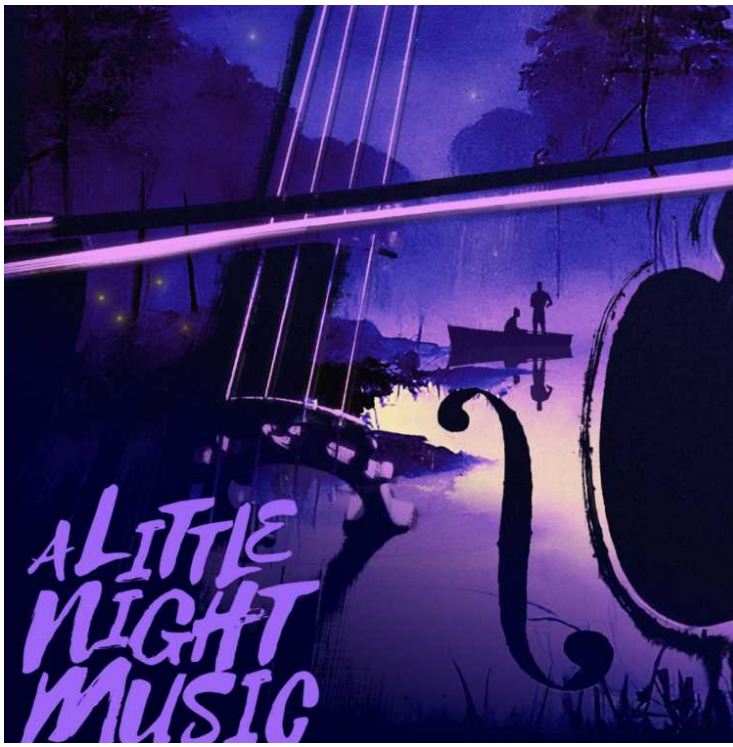
DATE: 02.11.2024  
SCALE: 3/16" = 1'  
REVISION NO: 05.02.2024  
DRAWN BY: PETER BURNS

**SOUND GROUND PLAN**

PLATE NO.



Peter Burns  
SOUND DESIGN  
PBURNS@ANDREW.CMU.EDU  
(616) 401-9876



BOOK BY: HUGH WHEELER  
MUSIC & LYRICS BY:  
STEPHEN SONDHEIM

DIRECTED BY:  
**ETHAN HEARD**

**PRODUCTION TEAM**

PRODUCER  
CMU SCHOOL OF DRAMA  
MUSICAL DIRECTOR  
RICK EDINGER  
SCENIC DESIGNER  
PAUL MOLINA  
LIGHTING DESIGNER  
JESSICA WINWARD  
COSTUME DESIGNER  
EVAN RILEY  
SOUND DESIGNER  
PETER BURNS  
JOB LEAD  
AKSHATHA SRIVASTAVA  
PRODUCTION MANAGER  
KYLE MUSGROVE

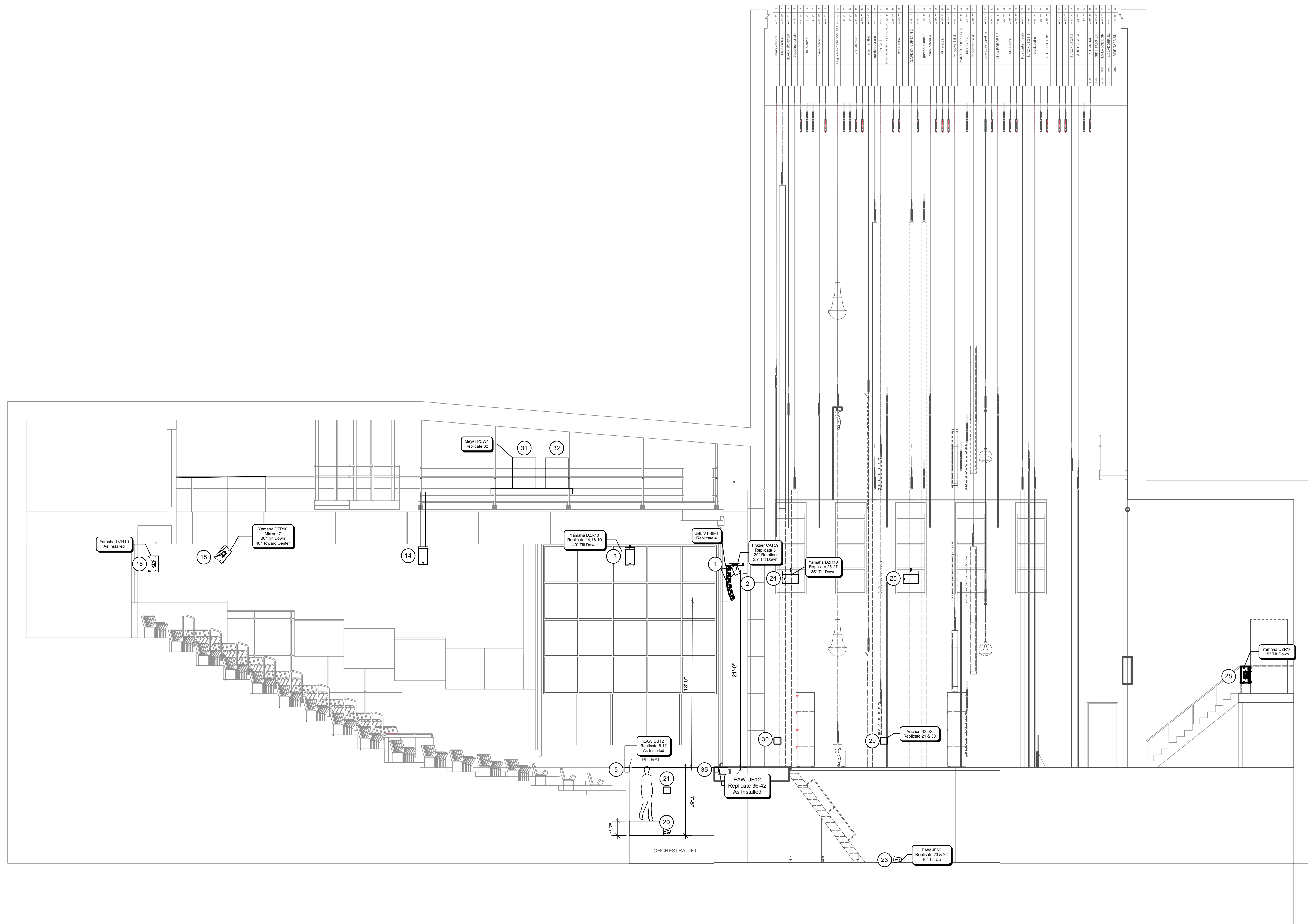
**THE CHOSKY THEATRE**

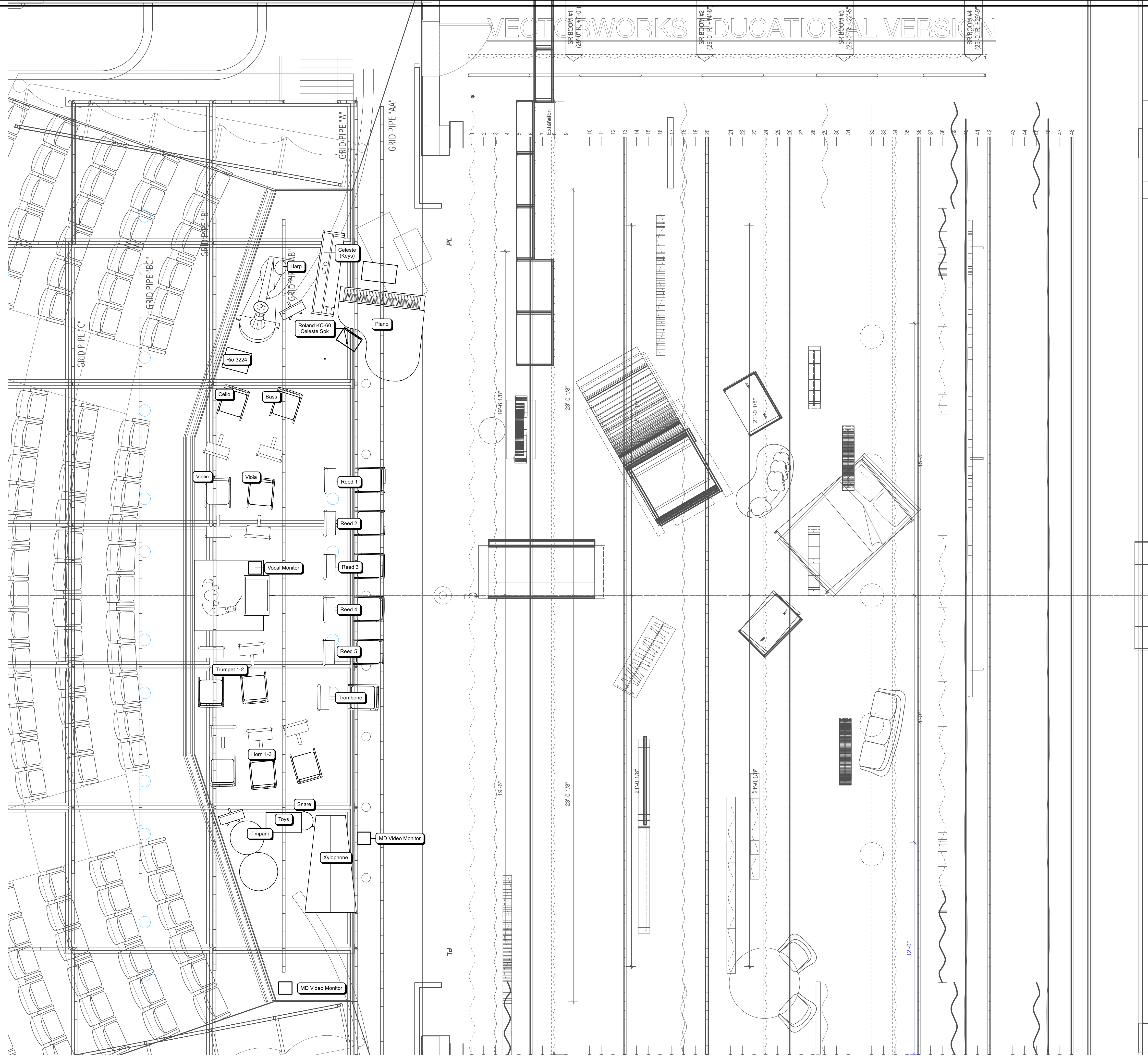
DATE: 02.11.2024  
SCALE: 3/16" = 1'  
REVISION NO: 05.02.2024  
DRAWN BY: PETER BURNS

**SOUND SECTION VIEW**

PLATE NO.

2





**Carnegie Mellon University**  
**School of Drama**

**Peter Burns**  
 SOUND DESIGN  
 PBURNS@ANDREW.CMU.EDU  
 (616) 401-9876



BOOK BY: HUGH WHEELER  
 MUSIC & LYRICS BY:  
 STEPHEN SONDHEIM

DIRECTED BY:  
**ETHAN HEARD**

**PRODUCTION TEAM**

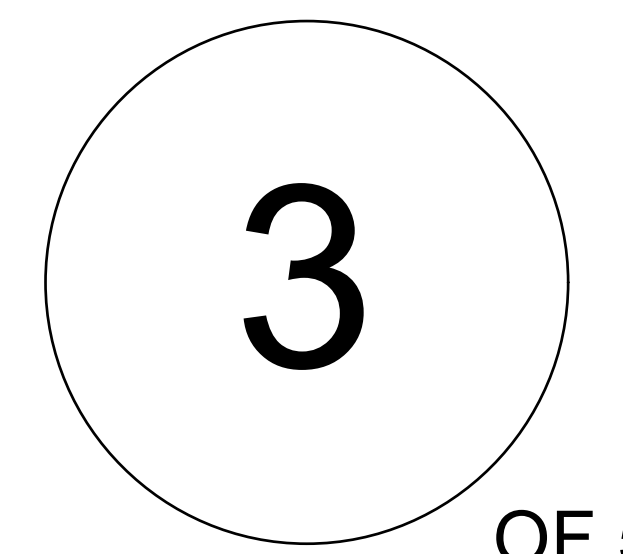
- PRODUCER  
CMU SCHOOL OF DRAMA
- MUSICAL DIRECTOR  
RICK EDINGER
- SCENIC DESIGNER  
PAUL MOLINA
- LIGHTING DESIGNER  
JESSICA WINWARD
- COSTUME DESIGNER  
EVAN RILEY
- SOUND DESIGNER  
PETER BURNS
- JOB LEAD  
AKSHATHA SRIVASTAVA
- PRODUCTION MANAGER  
KYLE MUSGROVE

**THE CHOSKY THEATRE**

DATE: 02.11.2024  
 SCALE:  
 REVISION NO: 05.02.2024  
 DRAWN BY: PETER BURNS

**ORCHESTRA LAYOUT**

PLATE NO.



Peter Burns SOUND DESIGN PURNS@ANDREW.CMU.EDU (616) 401-9876



BOOK BY: HUGH WHEELER MUSIC & LYRICS BY: STEPHEN SONDHEIM

DIRECTED BY: ETHAN HEARD

PRODUCTION TEAM

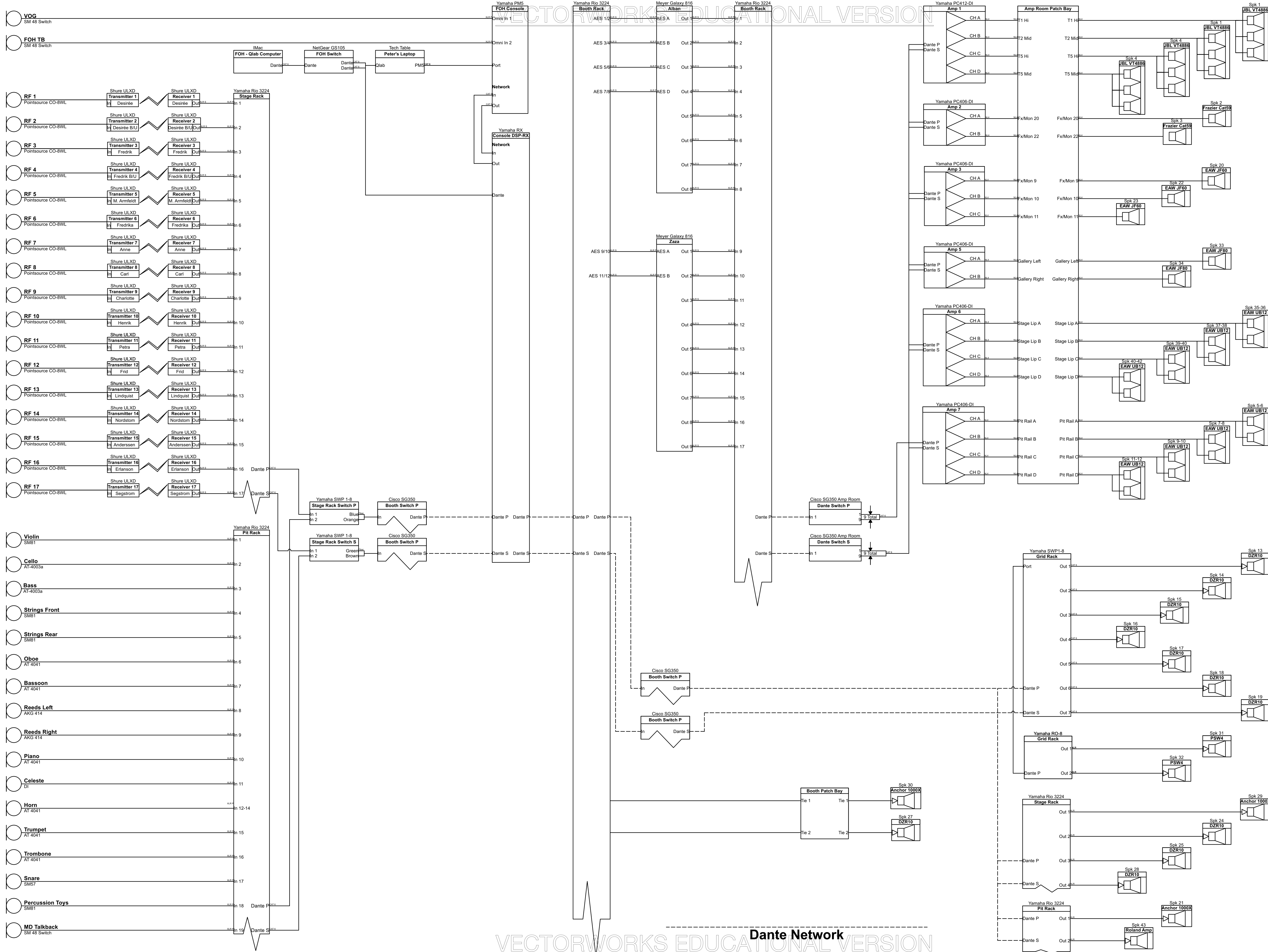
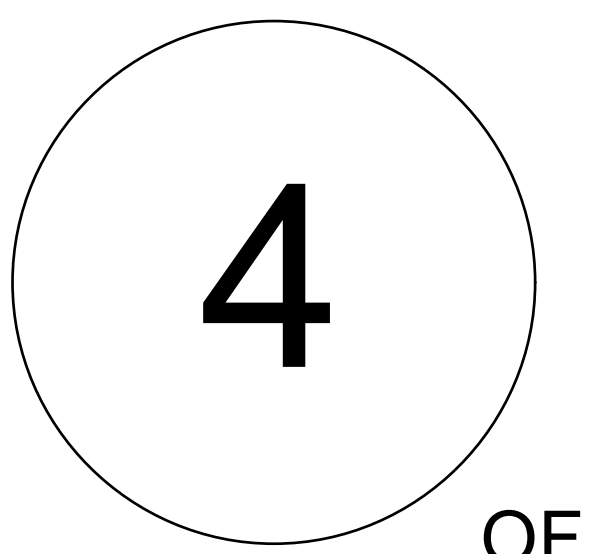
- PRODUCER CMU SCHOOL OF DRAMA
MUSICAL DIRECTOR RICK EDINGER
SCENIC DESIGNER PAUL MOLINA
LIGHTING DESIGNER JESSICA WINWARD
COSTUME DESIGNER EVAN RILEY
SOUND DESIGNER PETER BURNS
JOB LEAD AKSHATHA SRIVASTAVA
PRODUCTION MANAGER KYLE MUSGROVE

THE CHOSKY THEATRE

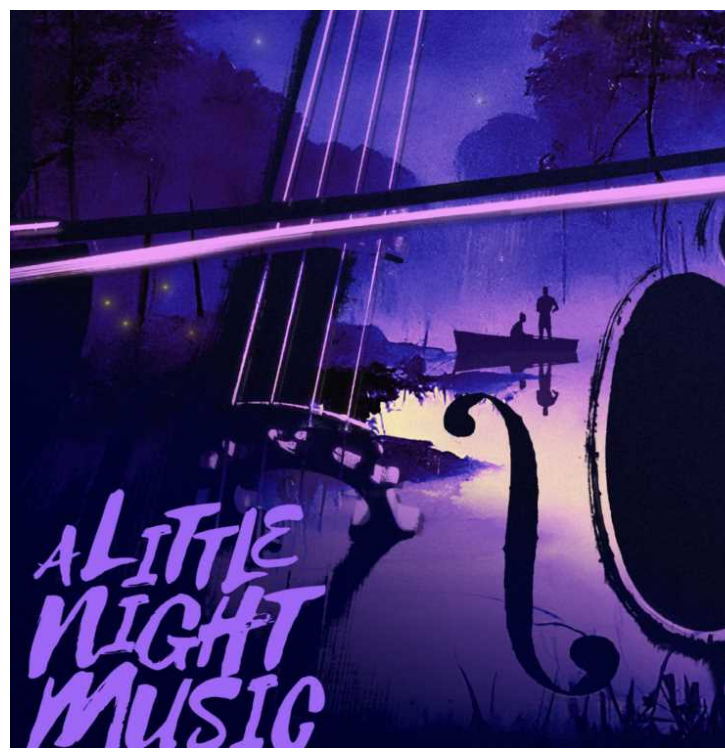
DATE: 02.11.2024
SCALE:
REVISION NO: 02.17.2024
DRAWN BY: PETER BURNS

SOUND SIGNAL FLOW

PLATE NO.



**Peter Burns**  
SOUND DESIGN  
PBURNS@ANDREW.CMU.EDU  
(616) 401-9876



BOOK BY: HUGH WHEELER  
MUSIC & LYRICS BY:  
STEPHEN SONDHEIM

DIRECTED BY:  
**ETHAN HEARD**

**PRODUCTION TEAM**

PRODUCER  
CMU SCHOOL OF DRAMA  
MUSICAL DIRECTOR  
RICK EDINGER  
SCENIC DESIGNER  
PAUL MOLINA  
LIGHTING DESIGNER  
JESSICA WINWARD  
COSTUME DESIGNER  
EVAN RILEY  
SOUND DESIGNER  
PETER BURNS  
JOB LEAD  
AKSHATHA SRIVASTAVA  
PRODUCTION MANAGER  
KYLE MUSGROVE

**THE CHOSKY THEATRE**

DATE: 02.11.2024  
SCALE: -  
REVISION NO: 05.02.2024  
DRAWN BY: PETER BURNS

**BOX BOOMS & LADDERS**

PLATE NO.

5  
OF 5

STAGE RIGHT LADDERS  
TRIM HEIGHT TO DECK FROM BOTTOM OF LADDERS: 20'-0"  
US/DS POSITIONS MEASURED FROM DS SIDE OF LADDERS

STAGE RIGHT BOX BOOM



STAGE LEFT LADDERS  
TRIM HEIGHT TO DECK FROM BOTTOM OF LADDERS: 20'-0"  
US/DS POSITIONS MEASURED FROM DS SIDE OF LADDERS

STAGE LEFT BOX BOOM

