

Designer/Contact Information:

Director: Samantha Ozeas
 Dramaturg: Kathryn Zapanta
 Scenic Designer: Elena Devechio
 Costume Designer: Jillian Warner
 Lighting Designer: Pablo Anton
 Sound Designer: Peter Burns

Drawn By: Peter Burns
 Revision Date: 2/2/22

NOTES:

JF60z may be swapped out with AC15 it depends on the space available under the platform and lighting.

Project: Athena

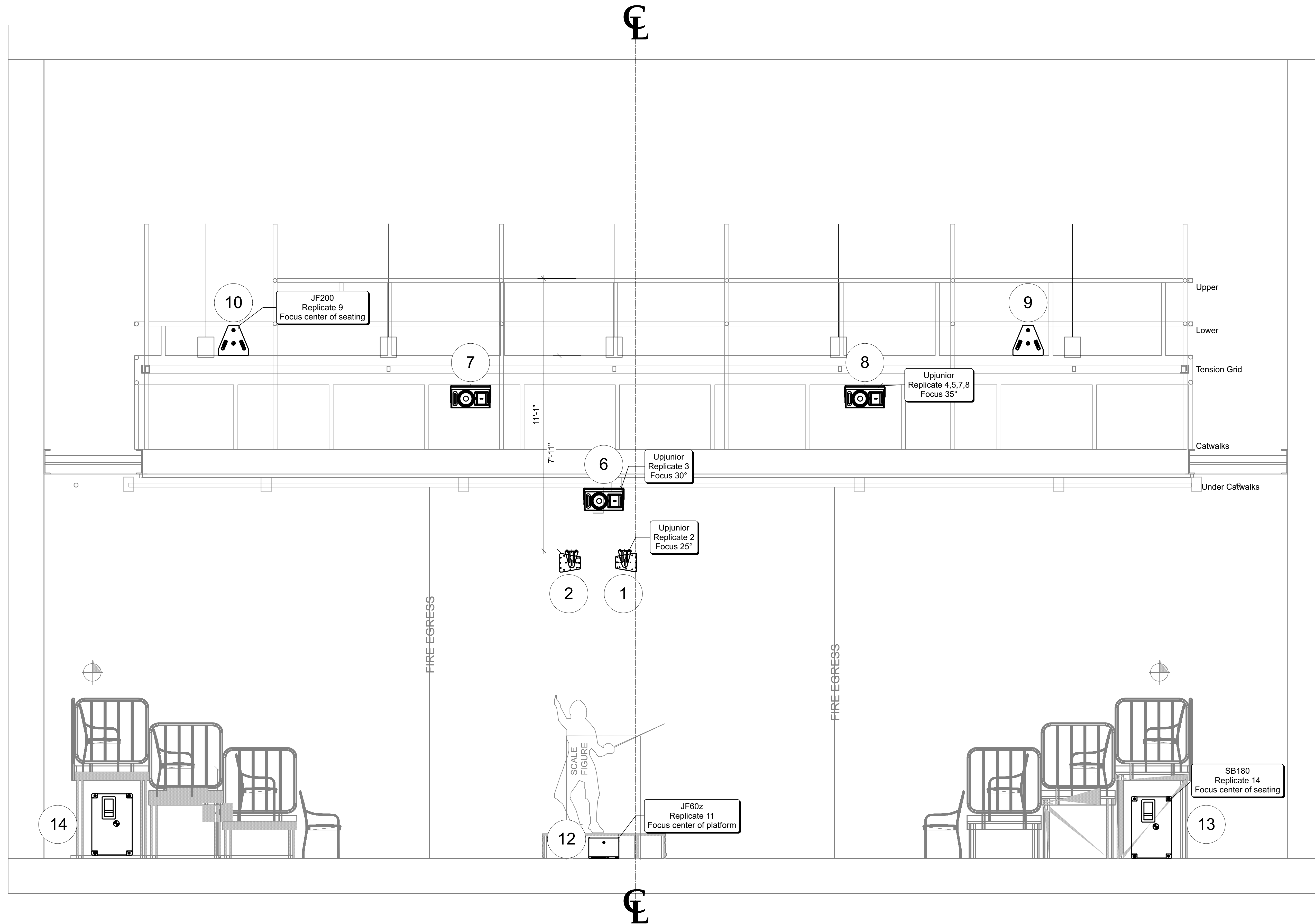
Producer:

Purpose: Ground Plan

Date: 1/26/22

Scale: 3/8"=1"-0"

Sheet: 1 OF 4



Designer/Contact Information:
 Director: Samantha Ozeas
 Dramaturg: Kathryn Zapanta
 Scenic Designer: Elena Devechio
 Costume Designer: Jillian Warner
 Lighting Designer: Pablo Anton
 Sound Designer: Peter Burns

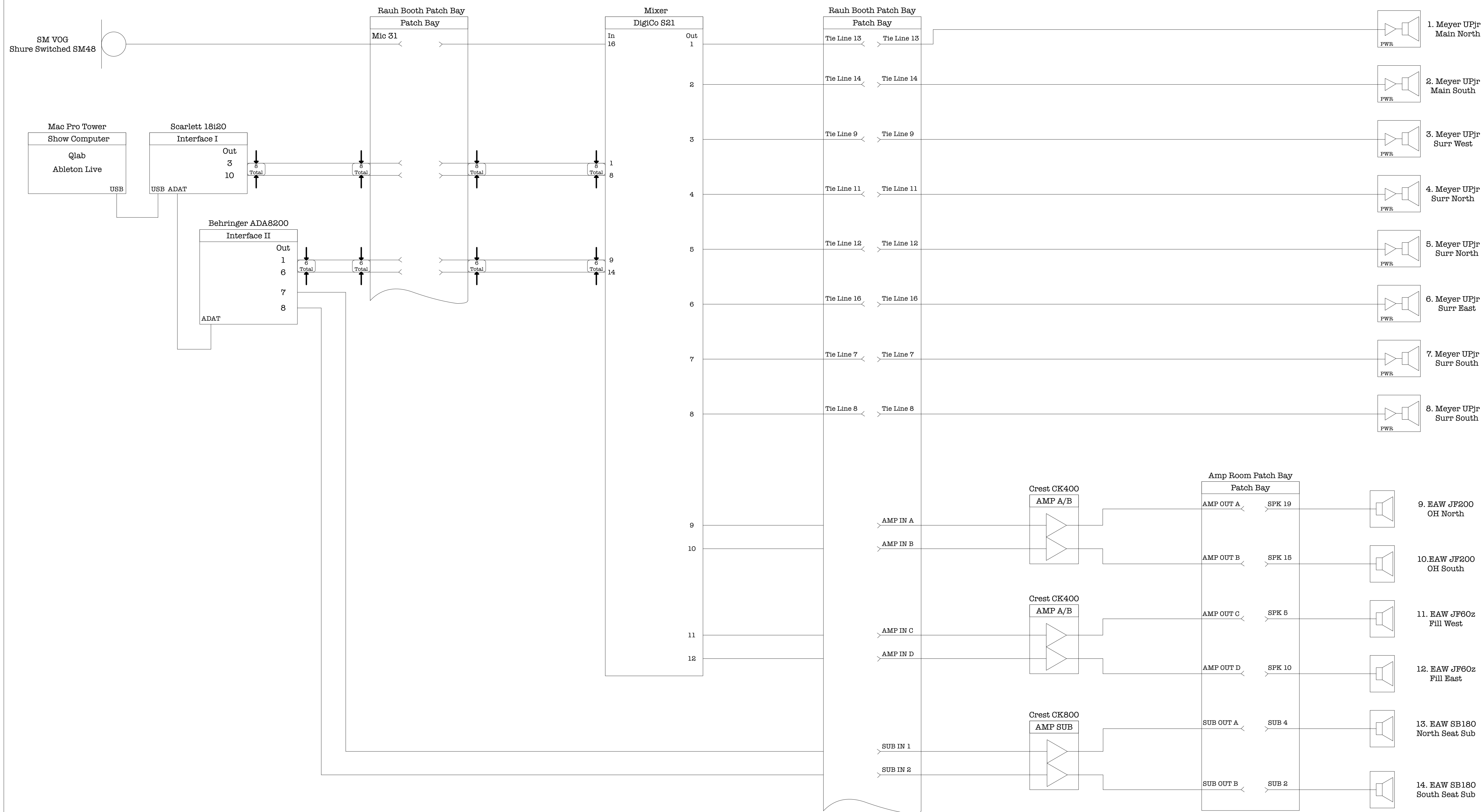
Drawn By: Peter Burns
 Revision Date: 2/2/22

NOTES:
 JF60z may be swapped out with AC15 it depends on the space available under the platform and lighting.
 The truss is 14'-0" from the bottom of the floor

Project: **Athena**
 Producer: **Section**

Date: 1/26/22
 Scale: 1/2"=1'-0"

Sheet: **2**
 OF
4



Designer/Contact Information:
 Director: Samantha Ozeas
 Dramaturg: Kathryn Zapanta
 Scenic Designer: Elena Devechio
 Costume Designer: Jillian Warner
 Lighting Designer: Pablo Anton
 Sound Designer: Peter Burns

NOTES:
 SB180s bypass the mixer and go directly into interface II.

Project:
Athena

Producer:
 Peter Burns

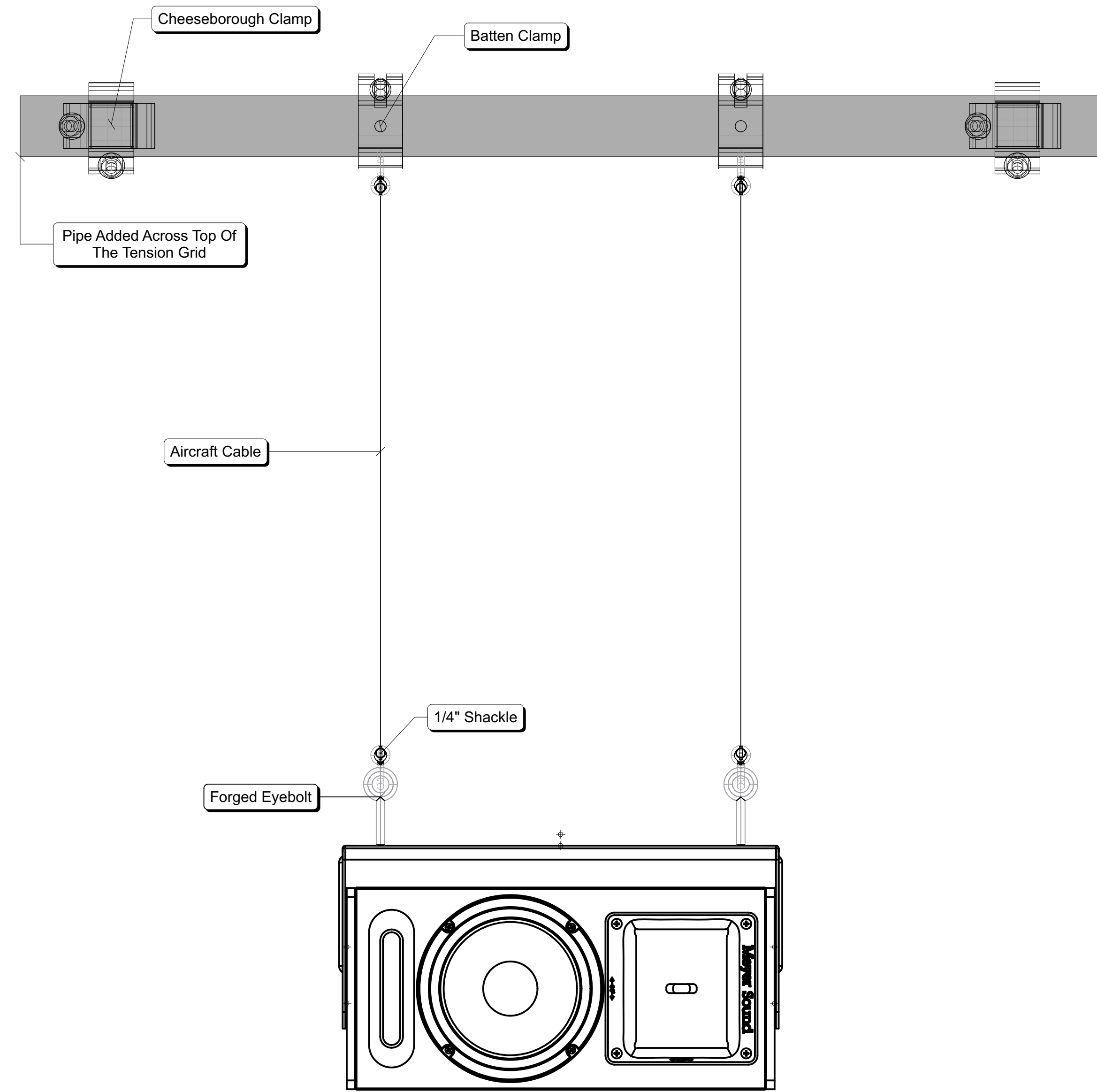
Purpose:
 Signal Flow

Date:
 1/27/22

Scale:

Sheet:
 3
 OF
 4

Drawn By: Peter Burns
Revision Date: 2/2/22



Athena		Rigging	
Project:			
Producer:			
Purpose:			
Date:	1/27/22		
Scale:	3"=1'-0"		
Sheet:	<div style="font-size: 2em; font-weight: bold;">4</div> <div style="font-size: 0.8em;">OF</div> <div style="font-size: 2em; font-weight: bold;">4</div>		
Designer/Contact Information:	Director: Samantha Ozeas Dramaturg: Kathryn Zapanta Scenic Designer: Elena Deveccio Costume Designer: Jillian Warner Lighting Designer: Pablo Anton Sound Designer: Peter Burns		
Drawn By:	Peter Burns		
Revision Date:			
NOTES:			